



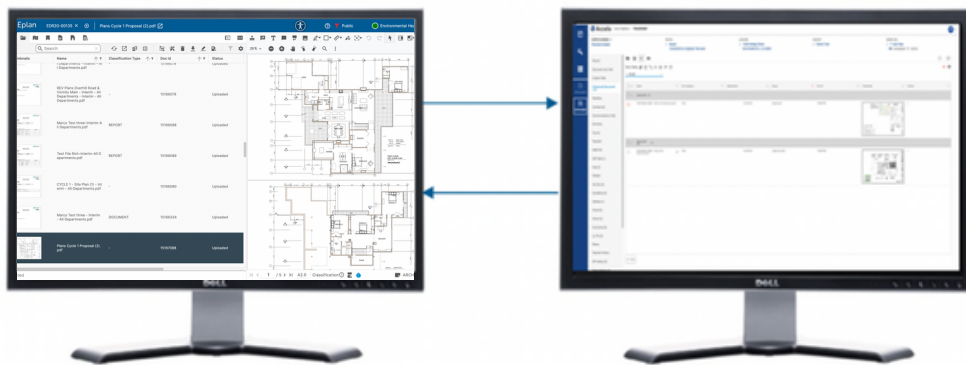
# Process Embedded Electronic Plan Review

**DigEplan, electronic plan review is fully embedded to your government platform, providing an efficient, flexible, and secure method to streamline electronic plan review and process enhancements. Accelerating permit application processes, DigEplan removes the need for paper, complex third-party integrations or disconnected PDF mark-up tools.**

## Further exploit your platform investment

Cities, counties and other public sector organizations can further exploit their investment in their chosen government technology platform when adding DigEplan. DigEplan enables users to efficiently work with electronic plans that need to be viewed, commented upon, stamped, and rejected or approved.

Users can instantly access plans and other supporting documents for analysis, viewing, annotation, stamping, printing, and archiving, removing the need for paper or cumbersome desktop PDF tools.



DigEplan is fully integrated to government technology platforms so all interactions with the plans are recorded and available in the system of record

## Reduce complexity and simplify your IT real estate

DigEplan does not require a separate portal, workflow, database, client installs, or file upload / download. It is fully integrated into your document management, screens, workflows and tasking, reducing complexity and providing an integrated user experience. Managing duplicate functionality for workflow, document management and portals alongside complex third-party integrations is an overhead on day-to-day operations and creates complexity in customer support.

## Lightning performance and reliability removing the need to triage plans

DigEplan's performance is comparable with desktop PDF viewing applications, but with all the advantages of full integration.

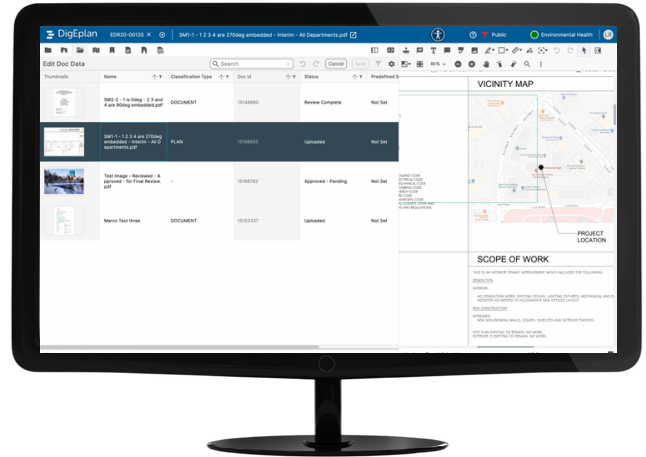
This allows organizations to work with large plan sets experiencing high performance for page loads and sheet navigation with engineering grade reliability. No more wait time, file opening issues or triage for plans required.

## Remove inefficient, non-integrated PDF desktop tools

Permit applications are typically reviewed by multiple departments within a city and external stakeholders. Traditionally, with paper-based processes or non-integrated desktop PDF tools, reviews were completed in a consecutive manner with the application being passed around to each reviewer. Desktop-based PDF tools require users to download and upload plans, and supporting documents, alongside a significant amount of manual data entry. This slow and inefficient practice leads to delays and less than timely approvals.

Using a fully integrated electronic planning review tool, reviewers can simultaneously review planning applications without any downloads, add their digital comments, and redlines at the same time. This serves to standardize, streamline and accelerate workflows for the electronic planning process.

DigEplan provides a rich set of engineering grade annotation features that allow reviewers to communicate, comment and add in-context observations and instructions, directly within plans and supporting plan documents.



DigEplan enables users to work with electronic plan workflow review cycles directly from their government technology platform

## Instantly analyze resubmitted plans with the comparison and overlay function

The compare capability allows users to instantly determine what has been added, removed, or changed in documents. This is particularly useful during the review of resubmitted plans or documents. Hard to spot differences between the original file and subsequent resubmittals can be easily identified, saving time and quickly catching accidental or intentional changes beyond what was requested.

## Increased productivity and simplified submission standards with sheet management

DigEplan supports the management of plans at a sheet level, removing the need to force applicants to resubmit entire plan sets at each cycle, or requiring plans to be split on upload, which is complicated and cumbersome.



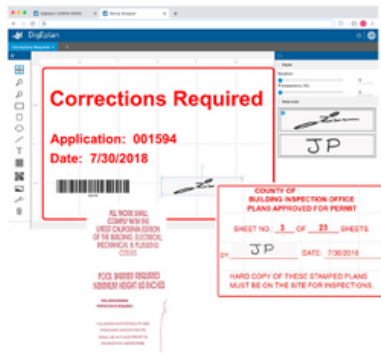
Quickly and easily spot hard to see differences in subsequent review cycle



Sheet management is automatic with DigEplan, so applicants and plan reviewers do not need to split plans on in-take

## Intelligent and batch stamping processes

Reviewers can apply Intellistamps to electronically sign and stamp document sets with attributes from your government technology platform. Intelligent stamps retrieve and insert information, enabling quick approvals and digital sign-off. The sign-off stamp contains information about the annotation author, CASE ID, date and time of creation, providing a reliable audit trail of changes and approvals.



DigEplan Intellistamps uses meta-data that supports electronic stamping and sign-off

## Automatically extract correction comments from plan review cycles; combined with the plans with revisions required sheets

Once a document has been reviewed in DigEplan, the details of any correction comments can be extracted from the marked-up plans and used to populate the comment report. This allows comments to be tracked through multiple review cycles.

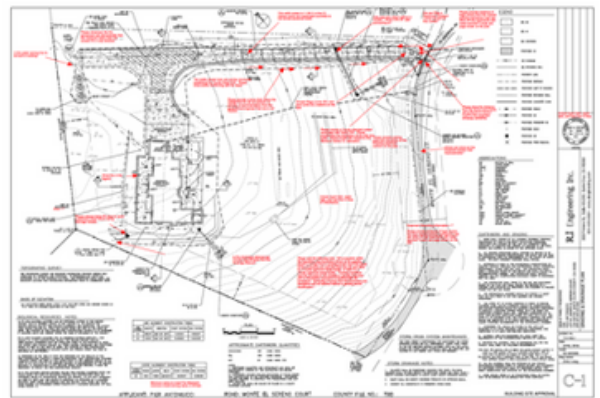
Permit Type: Construction Permit	Application Number: DEV18-00012
Project Description: Grading for SFR	Owner / Applicant / Contractor Name: Antonucci Pier G Trustee
Document Name: Civil - 01	Site Address: Monte Sereno Los Gatos CA 95030
Report Date: 11/06/2018	

Author Name	Author's Email	Author Phone No.:

Corrections in the following table need to be applied before a permit can be issued

Author Discipline	Author Name	Comment Status	Page No	Comments	Response Comments
Environmental Health	CFreitas	Open	2	Redesign to avoid the crossing.	
Fire Land Use	CFreitas	Open	2	Place a reversing curve to the left, tangent to both the proposed driveway and Monte El Sereno Court, to provide the minimum turning radius acceptable to the Fire Marshall's Office.	
Land Development	CFreitas	Open	1	11415-18G5	



Correction reports, that can be created based on the review status, all available in the system of record

## Rapid configuration and go-live with DigEplan

DigEplan is configured by certified, highly experienced delivery partners with elapsed go-live times of less than 60 days, and less than 30 if your existing workflows are all set for plan review.



## Contact Us

**For more information about DigEplan:**

**[www.avolvesoftware.com](http://www.avolvesoftware.com)**

**+1 602-714-9774**

**[sales@avolvesoftware.com](mailto:sales@avolvesoftware.com)**

Copyright © 2023, Avolve Software and/or its affiliates. All rights reserved.  
This document is provided for information purposes only, and the contents hereof are subject to change without notice. This document is not warranted to be error-free, nor is it subject to any other warranties or conditions, whether expressed orally or implied in law, including implied warranties and conditions merchantability or fitness for a particular purpose. We specifically disclaim any liability with respect to this document, and no contractual obligations are formed either directly or indirectly by this document. This document may not be reproduced or transmitted in any form or by any means, electronic or mechanical, for any purpose, without our prior written permission.

